


**VACCAR SOFFI CLUSTER**


- Capacity: 515cc
- Stainless Steel body with crystal view window
- Bracket: Cluster Flush inversion or ACR
- Floating S/S Pulsation manifold: Side by Side, Front to Rear, 4:1 or 2:2
- Milk Outlet tube: ID 17mm
- Milk inlet nipples: OD 14mm ID 11mm
- Milk Inlet nipple: Straight cut in diagonal format
- Milk Inlet nipples angle: 30 degrees
- Cluster weight: 2.29Kg
- Robust Stainless Steel construction
- Excellent all round visibility
- Designed for modern high yielding cows
- Fast milking
- Fast clearing central milk nipple
- Excellent vacuum stability
- Pleasant to handle and use.
- Easy to maintain
- Compatible with modern dairy chemicals
- Efficient cleaning
- Soffi Shell full S/S construction: 300gm
- Soffi Liner - full bore
- Compatible with Cluster Flushing


**VACCAR VARIFLO JETTER TRAY**

- Easy to use, very versatile
- With 4 jetter nozzles to suit 21 to 23mm mouthpiece liners
- Simply place liner over the jetter nozzle
- Variable flow non return valve – especially useful on jar parlours
- Individual flow adjustment to optimise balanced washing
- Control up to 8 litres per minute
- Manufactured from impact resistant modern plastics for optimum hygiene and durability
- Versatile installation - wall amount or stall work
- Suitable for most parlour designs
- Easy to maintain – spare parts available



Available through your local  **VACCAR** approved dairy engineer

Dairy  
Spares



# SOFFI OFFER 2018



For every  Soffi  
Cluster purchased

*RRP £150.00*

receive

1 extra set of  liners

**Free Of Charge**

*RRP £24.00*

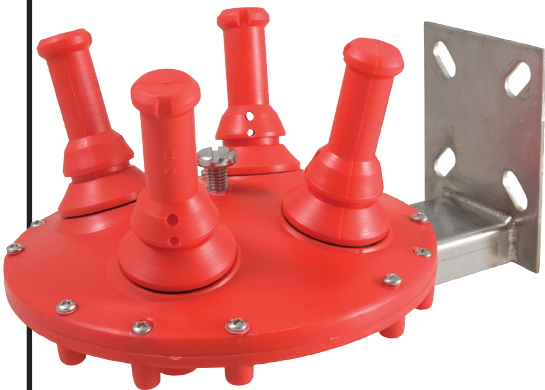


or

Buy a  red  
Jetter Tray at **Half Price**

*RRP £80.00*

**Offer Price £40.00**



Available through your local  approved dairy engineer

[www.dairyspares.com](http://www.dairyspares.com)